

Genomic Duplication and Overexpression of TJP2/ZO-2 Leads to Altered Expression of Apoptosis Genes in Progressive Nonsyndromic Hearing Loss DFNA51

Tom Walsh,^{1,8} Sarah B. Pierce,^{1,8} Danielle R. Lenz,² Zippora Brownstein,² Orit Dagan-Rosenfeld,² Hashem Shahin,³ Wendy Roeb,¹ Shane McCarthy,⁴ Alex S. Nord,¹ Carlos R. Gordon,⁵ Ziva Ben-Neriah,⁶ Jonathan Sebat,^{4,9} Moien Kanaan,³ Ming K. Lee,¹ Moshe Frydman,^{2,7} Mary-Claire King,^{1,*} and Karen B. Avraham^{2,*}

Age-related hearing loss is due to death over time, primarily by apoptosis, of hair cells in the inner ear. Studies of mutant genes responsible for inherited progressive hearing loss have suggested possible mechanisms for hair cell death, but critical connections between these mutations and the causes of progressive hearing loss have been elusive. In an Israeli kindred, dominant, adult-onset, progressive nonsyndromic hearing loss DFNA51 is due to a tandem inverted genomic duplication of 270 kb that includes the entire wild-type gene encoding the tight junction protein TJP2 (ZO-2). In the mammalian inner ear, TJP2 is expressed mainly in tight junctions, and also in the cytoplasm and nuclei. *TJP2* expression normally decreases with age from embryonic development to adulthood. In cells of affected family members, TJP2 transcript and protein are overexpressed, leading to decreased phosphorylation of GSK-3 β and to altered expression of genes that regulate apoptosis. These results suggest that TJP2- and GSK-3 β -mediated increased susceptibility to apoptosis of cells of the inner ear is the mechanism for adult-onset hearing loss in this kindred and may serve as one model for age-related hearing loss in the general population.

Age-related hearing loss is an extremely common problem worldwide. It is caused by the loss over time, primarily by apoptosis, of nonregenerative hair cells in the inner ear.^{1,2} In a large kindred from Israel, a gene responsible for progressive adult-onset hearing loss provides a clue to the mechanisms linking apoptosis to age-related hearing loss. Heretofore, genes responsible for hearing loss have been identified through point mutations, insertions, or deletions. Array comparative genomic hybridization (arrayCGH) enables genome-wide discovery of more complex mutations, such as microdeletions or microduplications, responsible for hearing loss. With arrayCGH, we identified DFNA51 (MIM 612642) as an inverted genomic duplication of the tight junction protein gene *TJP2* (MIM 607709), leading to overexpression of the TJP2 protein and altered expression of genes that regulate apoptosis. Overexpression of TJP2 implicates the GSK-3 β pathway in apoptosis leading to progressive hearing loss.

Family T, of Jewish ancestry, immigrated to Israel from Tunisia in 1951. In recent years, relatives in the kindred have sought medical advice for progressive hearing loss (Figure 1A). Pure tone audiometry revealed hearing loss with onset in the fourth decade, progressing first at high frequencies and ultimately becoming severe to profound at all frequencies (Figure 1B). There were no complaints of vertigo, dizziness, disequilibrium, or imbalance in affected

individuals, as evaluated by the ocular motor and vestibular examination.³ Genome-wide linkage analysis, under a model postulating a dominant highly penetrant susceptibility allele, was undertaken for 58 relatives from family T aged 30 years and older. Of the 350 microsatellite markers tested, only one marker yielded a lod score > 3.0 : at D9S175, $Z = 6.56$ ($\theta = 0$). Genotypes of multiple additional microsatellite markers flanking D9S175 revealed perfect linkage of the phenotype to chromosome 9p13.3-q21.13 from 38.177 MB to 79.921 MB (hg19) (Figure 1C). This genomic region harbors more than 80 known genes, including the transmembrane channel gene *TMC1* (MIM 606706), mutations in which are responsible for DFNA36 (MIM 606705) and DFNB7/11 (MIM 600974).⁴ We sequenced *TMC1* from genomic DNA and from cDNA isolated from lymphoblasts of affected individuals of family T and found no rare variants coinherited with hearing loss. In addition, heterozygosity at rs2589615 in *TMC1* exon 6 indicated that both *TMC1* messages were present in lymphoblasts of affected individuals. By using genomic DNA from relatives of family T, we sequenced exons and flanking regulatory regions of 20 other genes (including *TJP2*) in the linked region. No deleterious mutations were detected in these 21 genes.

In humans, the pericentromeric region of chromosome 9 is densely packed with segmental genomic duplications

¹Department of Medicine (Medical Genetics) and Department of Genome Sciences, University of Washington, Seattle, WA 98195, USA; ²Department of Human Molecular Genetics and Biochemistry, Sackler Faculty of Medicine, Tel Aviv University, Tel Aviv 69978, Israel; ³Department of Biological Sciences, Bethlehem University, Bethlehem, Palestinian Authority; ⁴Cold Spring Harbor Laboratory, Cold Spring Harbor, NY 11724, USA; ⁵Department of Neurology, Meir Medical Center, Kfar Saba 44281, Israel; ⁶Department of Human Genetics, Hadassah Hebrew University Hospital, Jerusalem 91120, Israel; ⁷Danek Gertner Institute for Medical Genetics, Sheba Medical Center, Tel Hashomer 52621, Israel

⁸These authors contributed equally to this work

⁹Present address: Department of Psychiatry, University of California, San Diego, CA 92093, USA

*Correspondence: mcking@uw.edu (M.-C.K.), karena@post.tau.ac.il (K.B.A.)

DOI 10.1016/j.ajhg.2010.05.011. ©2010 by The American Society of Human Genetics. All rights reserved.

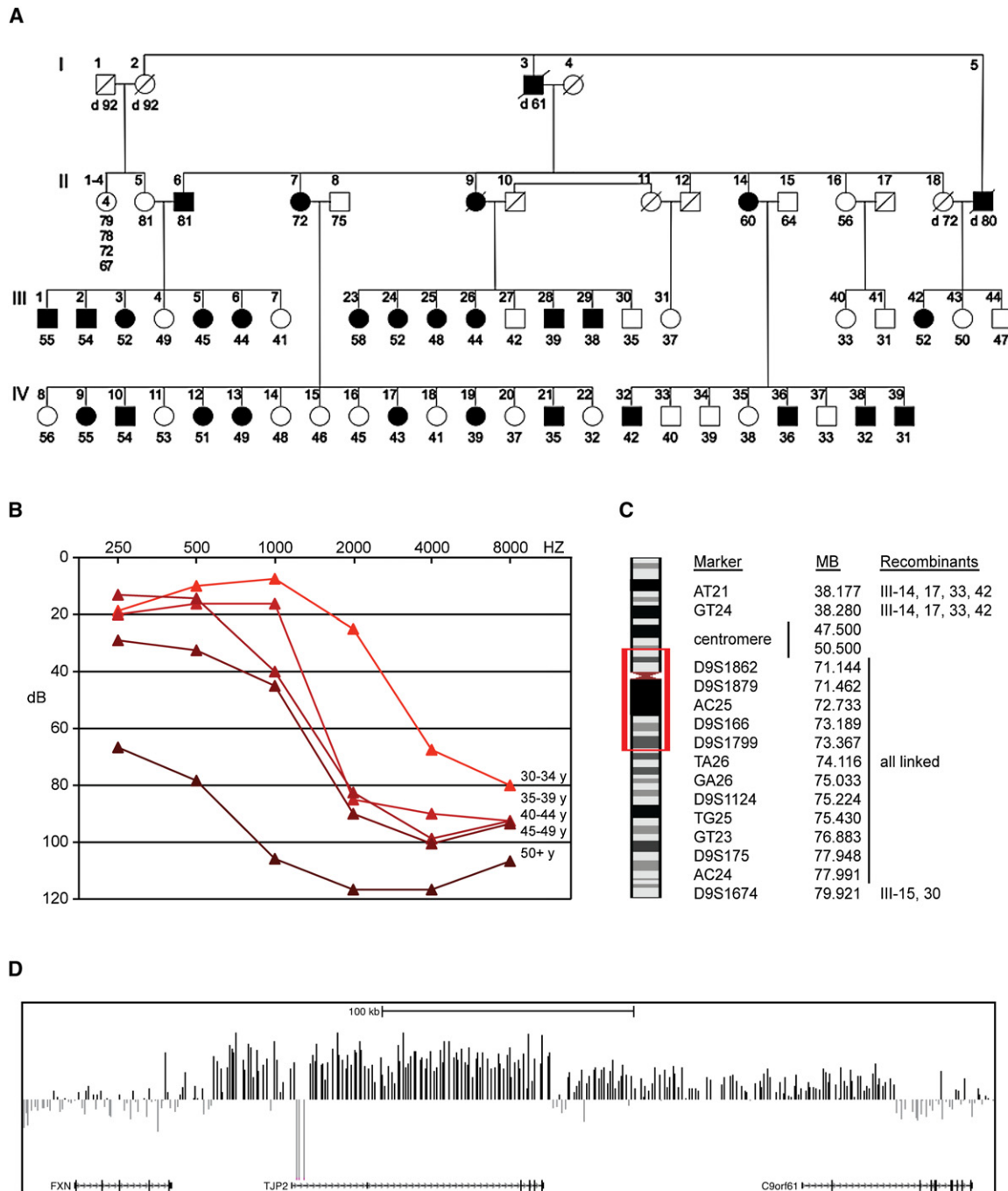


Figure 1. Linkage Analysis and Identification of the Inverted Genomic Duplication in Family T

(A) Family T with progressive hearing loss indicated by filled symbols.

(B) Audiogram of hearing loss by age.

(C) Chromosome 9 region of linkage to the hearing loss phenotype. Recombinant individuals are indicated in the notation of (A).

(D) arrayCGH scan indicating the family-specific duplication of ~270 kb in genomic DNA of II-7. arrayCGH also detected homozygosity for a polymorphic deletion of 8760 bp within the larger novel duplicated region. The study was approved by the Helsinki Committees of Tel Aviv University and the Israel Ministry of Health and by the Human Subjects Division of the University of Washington.

(segdups) and is prone to microdeletions and microduplications.⁵ In order to evaluate this region for microdeletions and microduplications in family T, we screened genomic DNA from affected individual II-7 by arrayCGH with the Nimblegen HD2 platform with the previously described

CHP-SKN sample⁶ as the reference. Data were normalized and CNVs were called by identifying regions where Z-scores consistently deviated from the diploid mean. At 9q21.11, a genomic duplication of ~270 kb was apparent in the genomic DNA of II-7 (Figure 1D). The

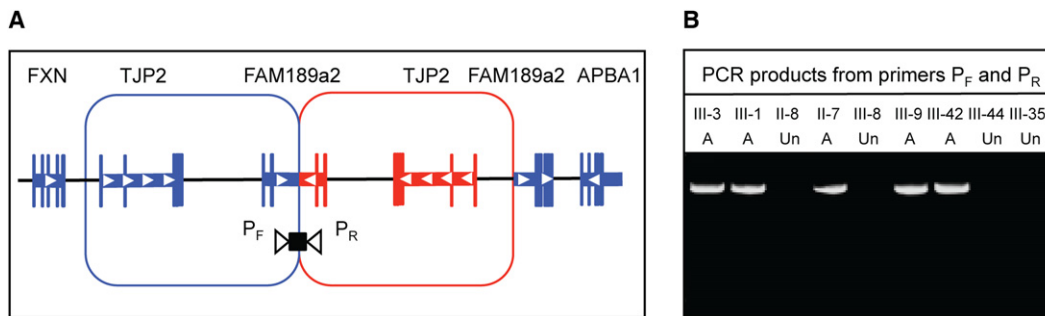


Figure 2. Characterization of the Inverted Duplication at *TJP2*

(A) Sketch of the inverted duplication.

(B) PCR products, ~7 kb in size, amplified with primers specific to the inverted duplication, from genomic DNA of affected (A) and unaffected (Un) relatives of family T.

duplication spanned 218 probes, with a median Z-score of 2.2. This duplication was not observed in the Database of Genomic Variants (March 25, 2010 update).

Genomic duplications may or may not be in tandem with their parent segment and may be either in the same or inverted orientation.⁷ We developed primers that would uniquely amplify genomic DNA with the duplication under each of these conditions. Forward (5'-CCCAGCAGAAGCAATGGTGGTAGCC-3') and reverse (5'-GGTGGTGAA TCCAAAAACACAAGAACAAAGTC-3') primers diagnostic for a tandem inverted duplication (Figure 2A) yielded products of expected size in family T relatives with hearing loss, but yielded no product in unaffected family T relatives (Figure 2B). Genotypes of all 58 participating relatives in family T indicated that the tandem inverted duplication was coinherited with hearing loss. The duplication spans approximately positions 71,705,804 to 71,974,823 (hg19) on chromosome 9 for a size of ~269,023 bp. The duplication includes the entire locus for the tight junction protein *TJP2*, which spans positions 71,788,971 to 71,870,124 (hg19).

The distal breakpoint of the inverted duplication occurs in intron 2 of *FAM189A2* (also named *c9orf61*). The annotated human sequence of *FAM189A2* indicates exon 1 to be noncoding and exon 2 to include only four translated codons. However, at the orthologous mouse sequence *Fam189a2*, most of exon 1 is an open reading frame beginning with Met, and together with exon 2 is predicted to encode 150 amino acids. Genomic sequence of human and mouse are very similar in this region. We carried out RT-PCR from human fetal brain and human lymphoblast RNA and found that the human and mouse transcripts are conserved (data not shown). However, with 3' rapid amplification of cDNA ends (3' RACE), we found no evidence of a mutant *FAM189A2* transcript in carriers of the genomic duplication, suggesting that no truncated *FAM189A2* product was made. In addition, there was no correlation of genotype with expression of full-length *FAM189A2* transcripts among family T relatives (Figure S1 available online). We thus focused on the duplication of *TJP2* as the likely cause of the hearing loss in family T.

In order to characterize expression of *Tjp2* during development, we assessed levels of *Tjp2* transcript expression in the mouse ear by quantitative RT-PCR of RNA from wild-type C3H mice at ages E16.5, P0, 1 week, 1 month, 3 months, and 9 months (Figure 3A). Total RNA was harvested from mouse whole inner ears and reverse transcribed with random primers. Quantitative PCR (qPCR) was performed on an ABI 7900HT Real-Time PCR System, according to manufacturer's instructions and with the TaqMan Gene Expression Assays indicated in Table S1. Relative to levels of the internal control *Hprt*, *Tjp2* expression decreased rapidly between E16.5 and 1 week to a level in adult mice approximately 50% the level at birth.

We evaluated localization of Tjp2 protein in the mouse inner ear at various ages by immunohistochemistry of paraffin-embedded sections (Figure 3). In the cochlea, Tjp2 is localized most prominently in membranes connecting hair cells and supporting cells (Figure 3C). Tjp2 is also localized in membranes connecting the cells of the vestibular system (Figure 3D). Localization is punctate and most concentrated at membrane boundaries, as expected for junctional staining.⁸ In the hair cell, Tjp2 is localized both at the apical edge, associated with tight junctions, and also along the basolateral side. In most epithelial cells, the basolateral side contains adherens junctions, but in the inner ear, apical and basal junctions are not distinct but form a combined structure, the tight-adherens junction, between outer hair cells and supporting Deiter cells.⁹ To a lesser extent, Tjp2 is also localized to both the cytoplasm and nucleus, presumably reflecting its role in signal transduction.¹⁰ The contrast between localization of Tjp2 and the closely related Tjp1 is illustrated in Figure S2.

By both genomic position and function, *TJP2* is an excellent candidate for the gene responsible for hearing loss in family T. However, the sequence of *TJP2* in family T is wild-type. In order to evaluate how genomic duplication of wild-type *TJP2* might lead to progressive hearing loss, we compared expression of *TJP2* in lymphoblasts of family T relatives carrying the duplication versus relatives not carrying the duplication. In cells of individuals with the

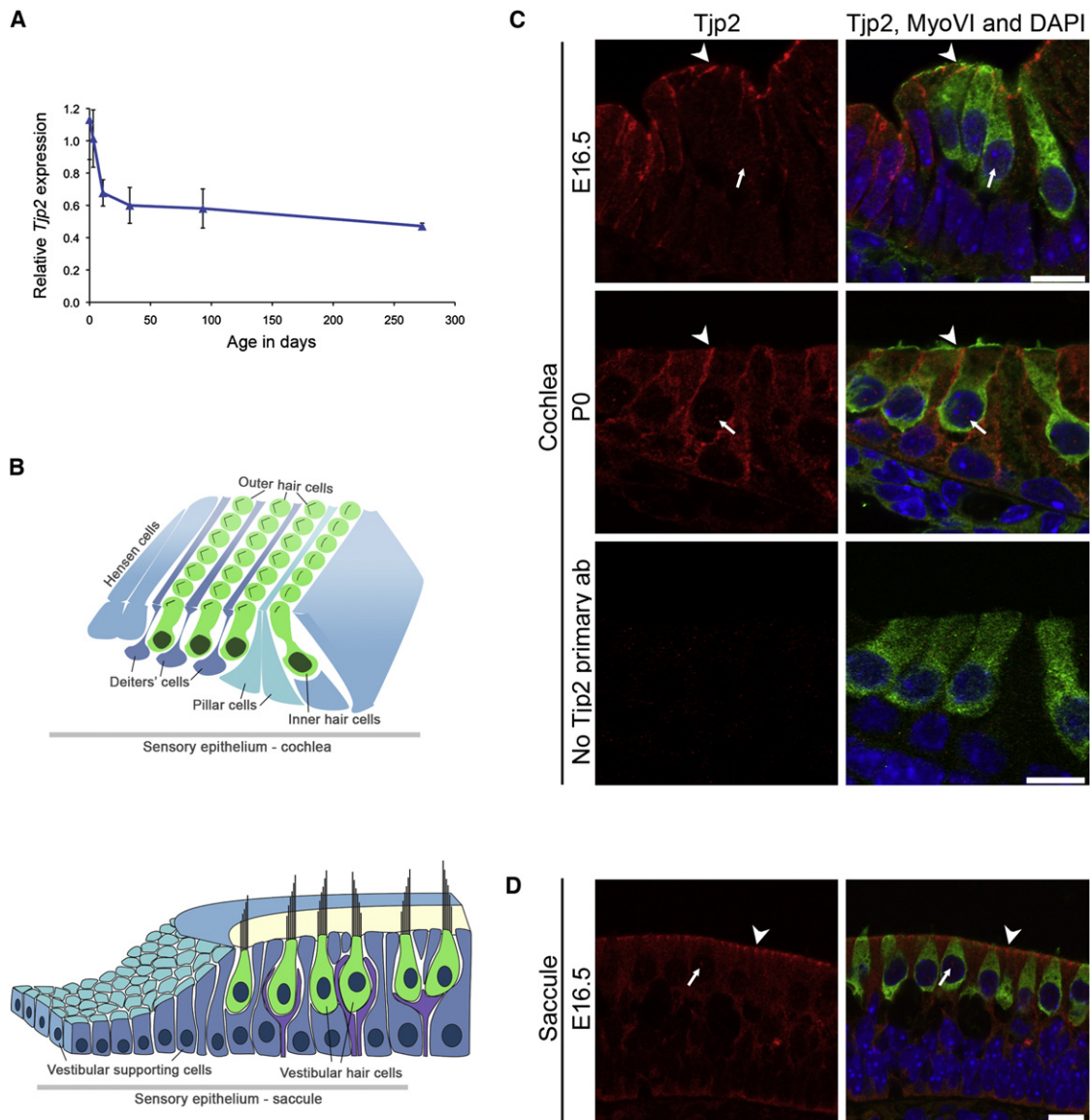


Figure 3. Expression of *Tjp2* in the Mouse Inner Ear

(A) Expression of *Tjp2* transcript at ages E16.5, P0, 1 week, 1 month, 3 months, and 9 months, determined by real-time qPCR, reveals decline with age until after hearing maturation at P30, then a stable level during adulthood. Values represent mean \pm SD of samples run in triplicate. The experiment was repeated twice; a representative experiment is shown.

(B) Schematic representation of the P0 cochlea (top) and saccule (bottom). The inner and outer hair cells of the cochlea make up the sensory epithelium; nonsensory supporting cells include Deiters', pillar, and Hensen cells. The saccule contains sensory hair cells and nonsensory supporting cells.

(C and D) Immunofluorescence confocal images of the cochlea (C) at E16.5 and P0 and of the saccule (D) at E16.5. *Tjp2* expression (red) is seen mainly at cell junctions (arrowheads) and also in the cytoplasm and nuclei (arrows) of hair cells and adjacent supporting cells. The vestibular pattern of expression was similar in the utricle and cristae at these ages (data not shown). Negative control staining of P0 cochlea without primary antibody against *Tjp2* demonstrates the low background of the secondary antibody. Hair cell cytoplasm and nuclei are marked by myosin VI (MyoVI, green) and DAPI (blue), respectively. Paraffin-embedded sections were stained with the primary antibodies goat anti-myosin VI (Santa Cruz Biotechnology), rabbit anti-ZO-2 (Cell Signaling), and mouse anti-ZO-1 (Zymed) and the fluorescence-conjugated secondary antibodies donkey anti-goat 488, donkey anti-rabbit 594, and donkey anti-mouse rhodamine (Molecular Probes). Imaging was done with the LSM 510 confocal microscope (Zeiss). All procedures involving animals met NIH guidelines and were approved by the Animal Care and Use Committees of Tel Aviv University and the University of Washington. Scale bar represents 10 μ m.

duplication, endogenous levels of *TJP2* message, relative to 18S rRNA, were elevated approximately 1.7-fold (Mann-Whitney U test, $p = 0.002$) (Figure 4A). Endogenous levels of *TJP2* protein were elevated approximately 2-fold (Figures 4B and 4C).

Experimental overexpression of *TJP2* has been shown to decrease phosphorylation of the serine/threonine protein kinase GSK-3 β at position serine 9.¹¹ Phosphorylation at Ser9 is known to inhibit the kinase activity of GSK-3 β .^{12,13} In order to determine the consequences of endogenous

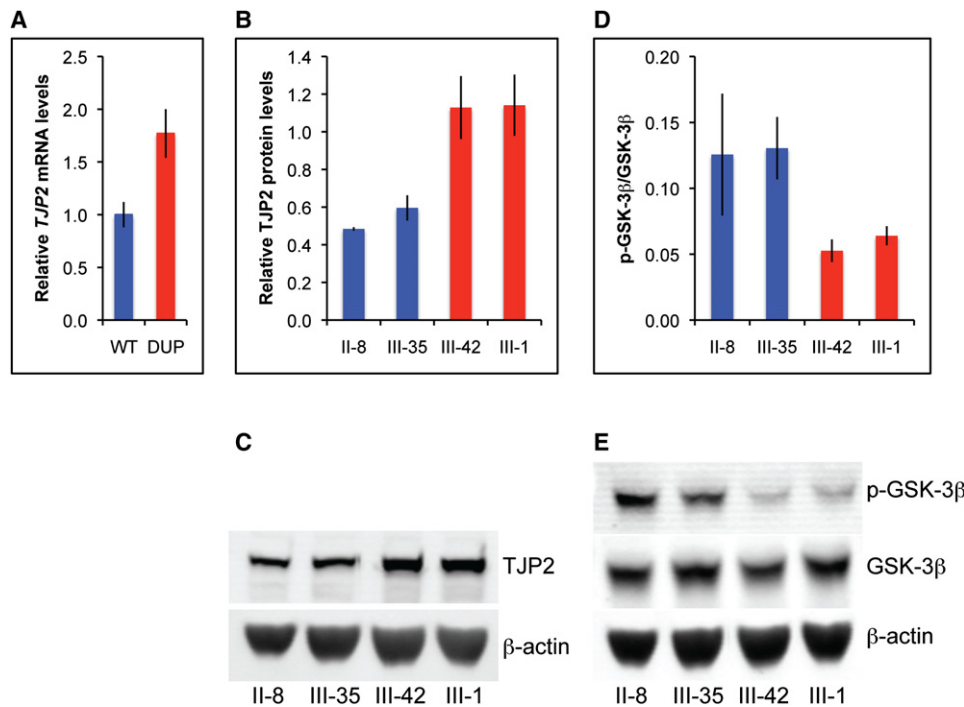


Figure 4. Overexpression of TJP2 and Reduced Phosphorylation of GSK-3 β Associated with the Genomic Duplication

(A) Expression of *TJP2* transcript in lymphoblasts of family T relatives with (DUP) and without (WT) the genomic duplication, determined by real-time qPCR. Values represent mean \pm SEM of data from three independent experiments, which included cells from four individuals without the duplication and six with the duplication.

(B–E) Lymphoblast cell lysates of family T relatives were analyzed by immunoblotting with primary antibodies rabbit anti-TJP2 (Santa Cruz Biotechnology), mouse anti-GSK-3 β (BD Transduction Laboratories), rabbit anti-phospho(Ser9)-GSK-3 β (p-GSK-3 β) (Cell Signaling Technology), and mouse anti- β -actin (Sigma) and IRDye-conjugated secondary antibodies (LI-COR Biosciences). Levels of TJP2 relative to β -actin (B) and levels of p-GSK-3 β relative to GSK-3 β (D) were quantified from western blots (C, E). Blue bars represent results from individuals without the duplication; red bars represent results for individuals with the duplication. Individuals are labeled as in Figure 1. Values in (B) and (D) represent mean \pm SEM of data from three independent experiments; representative western blots are shown.

overexpression of TJP2, we evaluated phosphorylation of GSK-3 β at Ser9 in cells of individuals with and without the genomic duplication (Figures 4D and 4E). The levels of total GSK-3 β were similar, but the amount of phosphorylated GSK-3 β was lower in cells of persons with the duplication. The decreased ratio of phosphorylated to unphosphorylated GSK-3 β suggests that GSK-3 β activity was higher in cells with the duplication.

Apoptosis of cells in the cochlea, including transcriptional changes in genes involved in apoptosis, has been implicated in age-related hearing loss in mice,^{14–16} as well as in hearing loss induced by acoustic overstimulation¹⁷ and chemotherapeutic agents.¹⁸ Because GSK-3 β has been shown to promote the mitochondrial intrinsic apoptosis pathway,¹³ and GSK-3 β inhibitors can block cisplatin-induced ototoxicity in mice,¹⁸ we investigated whether genomic duplication of *TJP2* led to changes in expression of apoptosis-related genes. We screened lymphoblast cells of four family T relatives, two with and two without the duplication, for differential expression of 92 apoptosis-related genes via human cellular apoptosis pathway plates (Applied Biosystems). Expression of the apoptosis-related genes was normalized to the expression of *HPRT* as an endogenous control. Genes were chosen for further analysis if expression by genotype differed at least 2-fold with

t test $p < 0.2$. Four genes (*BCL2L11*, *IL6*, *REL*, and *TSPO*) were identified by these criteria (Table S2). On replication, all four genes showed significant differences in expression with $p < 0.01$ (Figure 5A). Expression of *BCL2L11*, *REL*, and *TSPO* was observed in mouse cochlea; *IL6* was not detectably expressed (data not shown).

BCL2L11 (also known as BIM) and *TSPO* can both promote apoptosis via the intrinsic mitochondrial pathway^{19–21} and *REL* can suppress apoptosis as a subunit of the antiapoptotic transcription factor NF- κ B.²² *BCL2L11* (BIM) is a member of the *BCL2* family of proteins, which includes both pro- and antiapoptotic members. The balance between pro- and antiapoptotic *BCL2* family proteins influences the sensitivity of cells to apoptosis.^{20,21} Only a subset of *BCL2* family genes were evaluated in our initial screen of 92 apoptosis-related genes. We were interested in whether any genes in this family in addition to *BCL2L11* (*BIM*) were differentially expressed in cells with and without the genomic duplication. When the remaining *BCL2* family members^{20,21} were evaluated, we found that three additional genes were differentially expressed with $p < 0.01$. Expression of the proapoptotic gene *BID* was elevated 1.7-fold and expression of the antiapoptotic isoform of *BCL2L1* (*BCL-xL*) was decreased 1.4-fold. In addition, expression of the antiapoptotic *BCL2L2* (*BCL-w*)

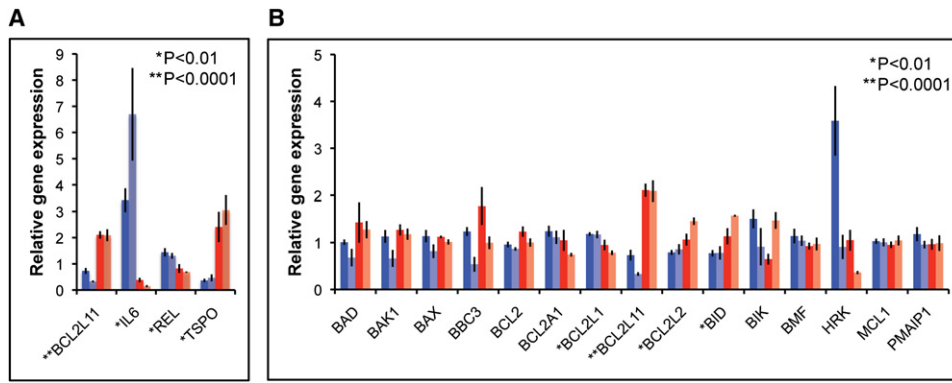


Figure 5. Effects of the *TJP2* Duplication on Expression of Apoptosis-Related Genes

Real-time qPCR analyses of RNA from lymphoblasts of family T relatives (blue and red bars and individual samples as in Figure 4).

(A) Expression of genes identified as differentially expressed in the screen of apoptosis-related genes.

(B) Expression of *BCL2* family genes. Gene expression was normalized to the geometric mean of the expression of the endogenous control genes *HPRT*, *TBP*, and *UBC*.⁴¹ Values represent mean \pm SEM of data from three independent experiments. The result for *BCL2L11* is indicated in both (A) and (B).

was elevated 1.5-fold (Figure 5B). Based on the GEPIS and UniGene databases, all of these genes are expressed in mouse inner ear. Taken together, these data suggest that in cells carrying the genomic duplication, there is an overall shift in expression of *BCL2* family genes that would favor apoptosis.

Tight junction proteins play multiple roles in epithelial cells.²³ Claudins, tricellulins, and zona occludins (*TJP*) family members are critical to the formation of diffusion barriers that regulate cellular permeability.²⁴ In the inner ear, tight junctions linking the cells of the sensory epithelia are crucial for the maintenance of separation between endolymphatic and perilymphatic fluids, which differ in their ionic composition.²⁵ This separation and the controlled transfer of ions, namely K^+ , under specific sound and vibration conditions, allow the formation of the endocochlear potential and the conversion of fluid changes into mechanical stimuli. Tight junctions ensure the strict compartmentalization of these regions. Mutations in tight junction proteins claudin-11, claudin-14, and tricellulin lead to hearing loss.^{26–29}

Tight junctions also participate in signal transduction mechanisms that regulate cell proliferation and gene expression. *TJP2* and related proteins are localized both at tight junctions and in the nucleus. In the nucleus, *TJP2* most probably functions in the regulation of gene expression by regulating nuclear import and export of transcription factors and other proteins.³⁰ *TJP2* has been shown to regulate GSK-3 β ,¹¹ a serine/threonine kinase involved in signal transduction pathways that regulate a wide range of cellular processes. In response to various upstream signals, GSK-3 β is phosphorylated at Ser9, inhibiting its kinase activity.^{12,13} Overexpression of *TJP2* leads to a decrease in GSK-3 β Ser9 phosphorylation,¹¹ thereby increasing GSK-3 β activity. Results for family T are consistent with this pattern, in that levels of *TJP2* transcript and protein are elevated and GSK-3 β -Ser9 phosphorylation is decreased in lymphoblast cells of family T members carrying the *TJP2*

duplication. Decreased GSK-3 β -Ser9 phosphorylation is an indicator of increased GSK-3 β activity in these cells.

In various cell types, including neurons, increased GSK-3 β activity makes cells more susceptible to apoptosis.¹³ GSK-3 β directly or indirectly regulates several key components of the intrinsic apoptotic pathway, including members of the *BCL2* family. GSK-3 β is required for the induction of *BCL2L11* (*BIM*) protein during stress- and dexamethasone-induced apoptosis.^{31,32} Phosphorylation by GSK-3 β activates the proapoptotic *BAX*,³³ which was previously linked to age-related hearing loss,³⁴ and destabilizes the antiapoptotic *MCL1*.³⁵ GSK-3 β activity also regulates permeability of the mitochondrial outer membrane through phosphorylation of *VDAC*.³⁶ In addition, phosphorylation of tau or kinesin by GSK-3 β can disrupt microtubules or intracellular protein transport, respectively, which can also contribute to apoptosis.¹³ The gene expression changes in lymphoblast cells of *TJP2* duplication carriers indicate a shift toward increased expression of proapoptotic and decreased expression of antiapoptotic genes, consistent with the known role of GSK-3 β in promoting apoptosis. Although the antiapoptotic *BCL2L2* (*BCL-w*) gene is slightly elevated, expression changes seen for other *BCL2* family members, as well as for *TSPO* and *REL*, probably shift the overall balance toward an increased sensitivity to apoptosis. In addition to these transcriptional changes, it is likely that elevated GSK-3 β activity also results in posttranslational cellular changes favoring apoptosis.

We hypothesize that in the inner ear, as in lymphoblasts, *TJP2* overexpression results in changes in GSK-3 β phosphorylation and apoptosis-related gene expression and that these changes increase the susceptibility of inner ear cells to apoptosis. Consistent with the hypothesis that GSK-3 β can regulate hair cell survival, inhibition of PI3 kinase signaling, which can negatively regulate GSK-3 β , blocked the ability of dexamethasone to protect cells from ototoxicity in a rat model of trauma-induced hearing loss.³⁷ *TJP2* is widely expressed, yet *TJP2* overexpression

via genomic duplication leads only to hearing loss. We speculate that because the inner ear is a very sensitive organ, a subtle difference in expression of genes in apoptotic pathways is manifested in a hearing loss phenotype. Even a subtle increase in apoptotic susceptibility of inner ear hair cells could account for the progressive hearing loss of carriers of the *TJP2* duplication. Our experiments suggest that overexpressed TJP2 in family T modulates intracellular signaling. This does not preclude the possibility that excess TJP2 may also perturb the stability of intercellular junctions and that this could also contribute to the hearing loss in family T.

Hearing loss associated with overexpression of *TJP2* may resemble age-related hearing loss generally in that both involve apoptosis. The dramatic decrease in *Tjp2* expression in the mouse ear by early adulthood suggests that maintaining relatively low levels of *Tjp2* from this stage on may be important for maintaining normal inner ear function throughout adulthood. In principle, other gain-of-expression mutations in *TJP2* could have a similar effect. An amino acid substitution in TJP2 that segregates with dominant progressive hearing loss has been reported in a Guatemalan family, although levels of TJP2 transcript and protein were not analyzed.³⁸

A missense mutation in TJP2 has also been reported in Amish families with oligogenic inheritance of hypercholanemia (MIM 607748) involving mutations in both *TJP2* and *BAAT* (MIM 602938). The TJP2 mutation, V48A, is in the N-terminal PDZ domain and affects protein folding, changing relative binding affinities of TJP2 for different claudins and leading to changes in ratios of claudins in tight junctions.³⁹ The relatives of family T do not have any signs of familial hypercholanemia. In family T, *TJP2* is overexpressed via genomic duplication, leading to modulation of intracellular signaling, and, we suggest, increasing the susceptibility of inner ear cells to apoptosis, leading to progressive hearing loss.

The general consensus is that age-related progressive hearing loss is due to loss of hair cells over time by apoptosis. Although this is a common theme, the routes to apoptosis are varied. Studies of mutant proteins responsible for progressive hearing loss have suggested possible mechanisms for hair cell death, including mechanical stress and aberrations of DNA repair, cell cycle progression, and cell signaling.⁴⁰ In most of these cases, the critical connection between the mutation and the cause of the progressive hearing impairment remains elusive. The biology underlying progressive hearing loss in family T may offer one such connection. Overexpression of *TJP2* in carriers of the genomic duplication suggests a mechanism for events leading to apoptosis, and thus eventually to death of hair cells and hearing loss in an extended family.

Supplemental Data

Supplemental Data include two figures and two tables and can be found with this article online at <http://www.cell.com/AJHG>.

Acknowledgments

The authors would like to thank the members of family T for suggesting this project and for their continued commitment to it. We also thank Amiel Dror for schematic figures of the inner ear. This work was supported by National Institutes of Health grant R01DC005641 from the National Institute of Deafness and Communication Disorders, by the European Commission FP6 Integrated Project EUROHEAR LSHG-CT-2004-512063, and by NIH training grants 5T32ES007032 (to W.R.) and 1T32ES015459 (to A.S.N.) from the National Institute of Environmental Health Sciences.

Received: April 3, 2010

Revised: May 11, 2010

Accepted: May 14, 2010

Published online: June 17, 2010

Web Resources

The URLs for data presented herein are as follows:

Database of Genomic Variants, <http://projects.tcag.ca/variation/>
Gene Hub–GEPIS, <http://www.cgl.ucsf.edu/Research/genentech/genehub-gepis/index.html>
Hereditary Hearing Loss Homepage, <http://webhost.ua.ac.be/hhh/>
NCBI UniGene, <http://www.ncbi.nlm.nih.gov/unigene>
Online Mendelian Inheritance in Man (OMIM), <http://www.ncbi.nlm.nih.gov/Omim/>
R project for statistical computing, <http://www.r-project.org>
UCSC Genome Browser, <http://genome.ucsc.edu/>

References

1. Kwan, T., White, P.M., and Segil, N. (2009). Development and regeneration in the inner ear. *Ann. N.Y. Acad. Sci.* 1170, 28–33.
2. Cheng, A.G., Cunningham, L.L., and Rubel, E.W. (2005). Mechanisms of hair cell death and protection. *Curr. Opin. Otolaryngol. Head Neck Surg.* 13, 343–348.
3. Zee, D.S., and Fletcher, W.A. (1996). Bedside examination. In *Disorders of the Vestibular System*, R.W. Baloh and G.M. Halmagyi, eds. (New York: Oxford University Press), pp. 178–190.
4. Kurima, K., Peters, L.M., Yang, Y., Riazuddin, S., Ahmed, Z.M., Naz, S., Arnaud, D., Drury, S., Mo, J., Makishima, T., et al. (2002). Dominant and recessive deafness caused by mutations of a novel gene, *TMCI*, required for cochlear hair-cell function. *Nat. Genet.* 30, 277–284.
5. Rocchi, M., Archidiacono, N., Ward, D.C., and Baldini, A. (1991). A human chromosome 9-specific alphoid DNA repeat spatially resolvable from satellite 3 DNA by fluorescent *in situ* hybridization. *Genomics* 9, 517–523.
6. Walsh, T., McClellan, J.M., McCarthy, S.E., Addington, A.M., Pierce, S.B., Cooper, G.M., Nord, A.S., Kusenda, M., Malhotra, D., Bhandari, A., et al. (2008). Rare structural variants disrupt multiple genes in neurodevelopmental pathways in schizophrenia. *Science* 320, 539.
7. Bailey, J.A., Gu, Z., Clark, R.A., Reinert, K., Samonte, R.V., Schwartz, S., Adams, M.D., Myers, E.W., Li, P.W., and Eichler, E.E. (2002). Recent segmental duplications in the human genome. *Science* 297, 1003–1007.

8. Suzuki, T., Oyamada, M., and Takamatsu, T. (2001). Different regulation of connexin26 and ZO-1 in cochleas of developing rats and of guinea pigs with endolymphatic hydrops. *J. Histochem. Cytochem.* *49*, 573–586.
9. Nunes, F.D., Lopez, L.N., Lin, H.W., Davies, C., Azevedo, R.B., Gow, A., and Kachar, B. (2006). Distinct subdomain organization and molecular composition of a tight junction with adherens junction features. *J. Cell Sci.* *119*, 4819–4827.
10. Traweger, A., Fuchs, R., Krizbai, I.A., Weiger, T.M., Bauer, H.C., and Bauer, H. (2003). The tight junction protein ZO-2 localizes to the nucleus and interacts with the heterogeneous nuclear ribonucleoprotein scaffold attachment factor-B. *J. Biol. Chem.* *278*, 2692–2700.
11. Tapia, R., Huerta, M., Islas, S., Avila-Flores, A., Lopez-Bayghen, E., Weiske, J., Huber, O., and González-Mariscal, L. (2009). Zona occludens-2 inhibits cyclin D1 expression and cell proliferation and exhibits changes in localization along the cell cycle. *Mol. Biol. Cell* *20*, 1102–1117.
12. Sugden, P.H., Fuller, S.J., Weiss, S.C., and Clerk, A. (2008). Glycogen synthase kinase 3 (GSK3) in the heart: A point of integration in hypertrophic signaling and a therapeutic target? A critical analysis. *Br. J. Pharmacol.* *153*, S137–S153.
13. Beurel, E., and Jope, R.S. (2006). The paradoxical pro- and anti-apoptotic actions of GSK3 in the intrinsic and extrinsic apoptosis signaling pathways. *Prog. Neurobiol.* *79*, 173–189.
14. Sha, S.H., Chen, F.Q., and Schacht, J. (2009). Activation of cell death pathways in the inner ear of the aging CBA/J mouse. *Hear. Res.* *254*, 92–99.
15. Someya, S., Xu, J., Kondo, K., Ding, D., Salvi, R.J., Yamasoba, T., Rabinovitch, P.S., Weindruch, R., Leeuwenburgh, C., Tanokura, M., and Prolla, T.A. (2009). Age-related hearing loss in C57BL/6J mice is mediated by Bak-dependent mitochondrial apoptosis. *Proc. Natl. Acad. Sci. USA* *106*, 19432–19437.
16. Tadros, S.F., D'Souza, M., Zhu, X., and Frisina, R.D. (2008). Apoptosis-related genes change their expression with age and hearing loss in the mouse cochlea. *Apoptosis* *13*, 1303–1321.
17. Hu, B.H., Cai, Q., Manohar, S., Jiang, H., Ding, D., Coling, D.E., Zheng, G., and Salvi, R. (2009). Differential expression of apoptosis-related genes in the cochlea of noise-exposed rats. *Neuroscience* *161*, 915–925.
18. Park, H.J., Kim, H.J., Bae, G.S., Seo, S.W., Kim, D.Y., Jung, W.S., Kim, M.S., Song, M.Y., Kim, E.K., Kwon, K.B., et al. (2009). Selective GSK-3b inhibitors attenuate the cisplatin-induced cytotoxicity of auditory cells. *Hear. Res.* *257*, 53–62.
19. Veenman, L., Papadopoulos, V., and Gavish, M. (2007). Channel-like functions of the 18-kDa translocator protein (TSPO): Regulation of apoptosis and steroidogenesis as part of the host-defense response. *Curr. Pharm. Des.* *13*, 2385–2405.
20. Brenner, D., and Mak, T.W. (2009). Mitochondrial cell death effectors. *Curr. Opin. Cell Biol.* *21*, 871–877.
21. Chipuk, J.E., Moldoveanu, T., Llambi, F., Parsons, M.J., and Green, D.R. (2010). The BCL-2 family reunion. *Mol. Cell* *37*, 299–310.
22. Kucharczak, J., Simmons, M.J., Fan, Y., and Gélinas, C. (2003). To be, or not to be: NF- κ B is the answer–role of Rel/NF- κ B in the regulation of apoptosis. *Oncogene* *8*, 8961–8982.
23. Matter, K., and Balda, M.S. (2007). Epithelial tight junctions, gene expression and nucleo-junctional interplay. *J. Cell Sci.* *120*, 1505–1511.
24. Schulzke, J.D., and Fromm, M. (2009). Tight junctions: Molecular structure meets function. *Ann. N Y Acad. Sci.* *1165*, 1–6.
25. Wangemann, P. (2002). K⁺ cycling and the endocochlear potential. *Hear. Res.* *165*, 1–9.
26. Wilcox, E.R., Burton, Q.L., Naz, S., Riazuddin, S., Smith, T.N., Ploplis, B., Belyantseva, I., Ben-Yosef, T., Liburd, N.A., Morell, R.J., et al. (2001). Mutations in the gene encoding tight junction claudin-14 cause autosomal recessive deafness DFNB29. *Cell* *104*, 165–172.
27. Ben-Yosef, T., Belyantseva, I.A., Saunders, T.L., Hughes, E.D., Kawamoto, K., Van Itallie, C.M., Beyer, L.A., Halsey, K., Gardner, D.J., Wilcox, E.R., et al. (2003). Claudin-14 knockout mice, a model for autosomal recessive deafness DFNB29, are deaf due to cochlear hair cell degeneration. *Hum. Mol. Genet.* *12*, 2049–2061.
28. Gow, A., Davies, C., Southwood, C.M., Frolenkov, G., Chrus-towski, M., Ng, L., Yamauchi, D., Marcus, D.C., and Kachar, B. (2004). Deafness in Claudin-11 null mice reveals the critical contribution of basal cell tight junctions to stria vascularis function. *J. Neurosci.* *24*, 7051–7062.
29. Riazuddin, S., Ahmed, Z.M., Fanning, A.S., Lagziel, A., Kitajiri, S., Ramzan, K., Khan, S.N., Chattaraj, P., Friedman, P.L., Anderson, J.M., et al. (2006). Tricellulin is a tight-junction protein necessary for hearing. *Am. J. Hum. Genet.* *79*, 1040–1051.
30. Balda, M.S., and Matter, K. (2009). Tight junctions and the regulation of gene expression. *Biochim. Biophys. Acta* *1788*, 761–767.
31. Nuutinen, U., Ropponen, A., Suoranta, S., Eeva, J., Eray, M., Pellinen, R., Wahlfors, J., and Pelkonen, J. (2009). Dexamethasone-induced apoptosis and up-regulation of Bim is dependent on glycogen synthase kinase-3. *Leuk. Res.* *33*, 1714–1717.
32. Hongisto, V., Smeds, N., Brecht, S., Herdegen, T., Courtney, M.J., and Coffey, E.T. (2003). Lithium blocks the c-Jun stress response and protects neurons via its action on glycogen synthase kinase 3. *Mol. Cell. Biol.* *23*, 6027–6036.
33. Linseman, D.A., Butts, B.D., Precht, T.A., Phelps, R.A., Le, S.S., Laessig, T.A., Bouchard, R.J., Florez-McClure, M.L., and Heidenreich, K.A. (2004). Glycogen synthase kinase-3b phosphorylates Bax and promotes its mitochondrial localization during neuronal apoptosis. *J. Neurosci.* *24*, 9993–10002.
34. Riva, C., Donadieu, E., Magnan, J., and Lavieille, J.P. (2007). Age-related hearing loss in CD/1 mice is associated to ROS formation and HIF target proteins up-regulation in the cochlea. *Exp. Gerontol.* *42*, 327–336.
35. Maurer, U., Charvet, C., Wagman, A.S., Dejardin, E., and Green, D.R. (2006). Glycogen synthase kinase-3 regulates mitochondrial outer membrane permeabilization and apoptosis by destabilization of MCL-1. *Mol. Cell* *21*, 749–760.
36. Pastorino, J.G., Hoek, J.B., and Shulga, N. (2005). Activation of glycogen synthase kinase 3b disrupts the binding of hexokinase II to mitochondria by phosphorylating voltage-dependent anion channel and potentiates chemotherapy-induced cytotoxicity. *Cancer Res.* *65*, 10545–10554.
37. Haake, S.M., Dinh, C.T., Chen, S., Eshraghi, A.A., and VanDe-Water, T.R. (2009). Dexamethasone protects auditory hair cells against TNF α -initiated apoptosis via activation of PI3K/Akt and NF κ B signaling. *Hear. Res.* *255*, 22–32.
38. Hilgert, N., Alasti, F., Dieltjens, N., Pawlik, B., Wollnik, B., Uyguner, O., Delmaghani, S., Weil, D., Petit, C., Danis, E.,

- et al. (2008). Mutation analysis of *TMCI* identifies four new mutations and suggests an additional deafness gene at loci DFNA36 and DFNB7/11. *Clin. Genet.* 74, 223–232.
39. Carlton, V.E.H., Harris, B.Z., Puffenberger, E.G., Bata, A.K., Knisely, A.S., Robinson, D.L., Strauss, K.A., Shneider, B.L., Lim, W.A., Salen, G., et al. (2003). Complex inheritance of familial hypercholanemia with associated mutations in *TJP2* and *BAAT*. *Nat. Genet.* 34, 91–96.
40. Dror, A.A., and Avraham, K.B. (2009). Hearing loss: Mechanisms revealed by genetics and cell biology. *Annu. Rev. Genet.* 43, 411–437.
41. Vandesompele, J., De Preter, K., Pattyn, F., Poppe, B., Van Roy, N., De Paepe, A., and Speleman, F. (2002). Accurate normalization of real-time quantitative RT-PCR data by geometric averaging of multiple internal control genes. *Genome Biol.* 3, 1–12.